

The Deposit Historical Society High End Auction Partial Catalog

Steiff Bear “TEDDY - BAREN”

Color: Cream/Blond
Size: 15” tall
Poseable: arms, legs, and head
Made in Germany



Steiff Bear “TEDDYBAR Blond 42”

Color: Cream/Blond
Size: 15” tall
Poseable: arms, legs, and head
Made in Germany

In box



Steiff Bear “1928 Classic Petsy”

Color: Cinnamon
Size: 13” tall
Poseable: arms, legs, and head
Made in Germany



Steiff Bear “POLO BEAR #3131”

Color: Yellow/Gold
Size: 13” tall
Poseable: arms, legs, and head
Made in Germany



Steiff Bear “Delighted No. 00211”

Color: Gold

Size: 12” tall

Poseable: arms, legs, and head

Made in Germany



Steiff Bear “TROMMLER”

Color: Tan

Size: 12” tall

Poseable: arms, legs, and head

Made in Germany



Steiff Bear “SAM TEDDYBEAR 42”

Color: Tan

Size: 11.5” tall

Poseable: arms, legs, and head

Made in Germany

In Box



Steiff Pull Toy “CAMEL”

Color: Tan

Size: 11” tall 15” long

Made in Germany

In Box



M. J. Hummel “Second Annual Bell 1979”

Size: 6” tall

in bas-relief

Made in Germany

In Box



M. J. Hummel “Annual Plate 1979”

Size: 7.5” Dia.

in bas-relief

Made in Germany

In Box



Toy Ladderback Chair

Color: Blue-green

Size: 15” tall 7.25 Wide



Toy Chair with Amish Doll

Color: Chair Black

Doll Blue, Purple, and Black

Size: 20.5” tall



Traditional Hand Hooked Wool Rug

Made By: Ethel Mae Musante Circa 1976

Design: Pearl K. McGown

Color: Eagle Browns

Sky Blues

Size: 27" X 31"



Weathervane Pattern RUNNING HORSE

Color: Rust / Brown

Size: 22" tall 21.25" wide

Painted steel w. Wood base



Tintype - Ferrotipe 3 CARD PLAYERS

Size: 4" X 5" Trimmed 1/2 Plate

Matted and Framed 8" X 9"



Traditional Hand Hooked Wool Rug

Made By: Ethel Mae Musante Circa 1970s

Design: Pearl K. McGown

Color: Multi - colored

Size: 16" X 36"



18K Gold Ring with Opal



14K Gold Ring with
8 Diamonds
5 Emeralds



Black Cultured Pearls
String of 36



Kelly & Steinman
“Deposit Glass” SPOONREST
Size: 3” X 6” Approx.



Emboidery - Peaseable Kingdom

Made By: Ethel Mae Musante Circa 1970s

Color: Multi - colored

Size: 20" X 19"



Emboidery - Natural Forms

Made By: Ethel Mae Musante Circa 1970s

Color: Multi - colored

Size: 14" X 22.5"



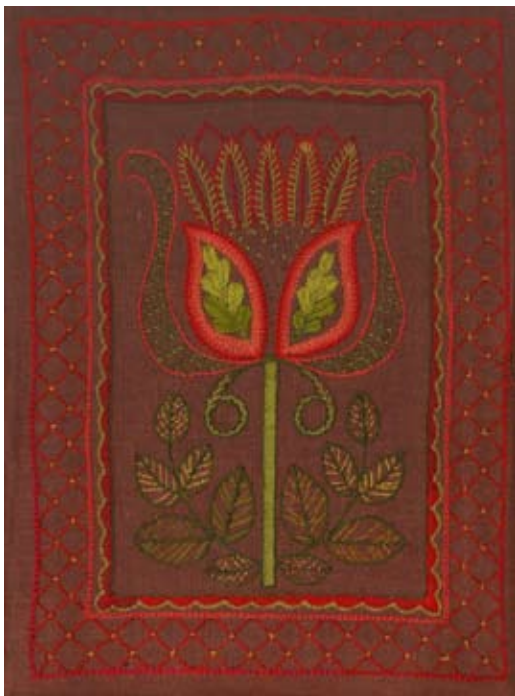
Emboidery - Floral

Made By: Ethel Mae Musante

Circa 1970s

Color: Pinks & Reds

Size: 10" X 30"



Emboidery - Floral

Made By: Ethel Mae Musante

Circa 1970s

Color: Brown Back Ground

Size: 16.5" X 22"



Emboidery - Boy w. Fiddle

Made By: Ethel Mae Musante Circa 1970s

Color: Multi - colored

Size: 18" X 23.5"



Emboidery - Boy w. Toys & Cat

Made By: Ethel Mae Musante Circa 1970s

Color: Multi - colored

Size: 18.5" X 24"

